

Valentine
SNIPPETS of SALEM

607 – 1940 ECHO Wilmot
Union High School
Yearbook, no signatures

The yearbook used for this PDF was disassembled and scanned direct from the original printing.

A photo of the cover exists in the digital files.

In some cases, the owner is noted.

In some cases, there are signatures but these signatures are not searchable.

Researchers should look for a relative's signature in the collective.

In some of these instances, images were made of the individual color pages.

This book had a soft cover.

The originals were returned to the document owner for archiving.

The document used to create this PDF is from the WKCHS collection.

0-46 pages

NOTE:

The materials herein were contributed by those of the area who wished that the history they have experienced be saved for the future generations. These may represent private documents as well as previously published articles and obituaries and images from their saved collections..

Researchers should also refer to the Valentine Digital archives at the SALEM COMMUNITY LIBRARY (and perhaps other websites) for more images in this collection or digital images of items photocopied in this booklet or related to the topic..

Compiled 5/2014 by L S Valentine Copyright©Valentine2014

Valentine
SNIPPETS of SALEM

607 – 1940 ECHO Wilmot
Union High School
Yearbook, no signatures

The yearbook used for this PDF was disassembled and scanned direct from the original printing.

A photo of the cover exists in the digital files.

In some cases, the owner is noted.

In some cases, there are signatures but these signatures are not searchable.

Researchers should look for a relative's signature in the collective.

In some of these instances, images were made of the individual color pages.

This book had a soft cover.

The originals were returned to the document owner for archiving.

The document used to create this PDF is from the WKCHS collection.

0-46 pages

NOTE:

The materials herein were contributed by those of the area who wished that the history they have experienced be saved for the future generations. These may represent private documents as well as previously published articles and obituaries and images from their saved collections..

Researchers should also refer to the Valentine Digital archives at the SALEM COMMUNITY LIBRARY (and perhaps other websites) for more images in this collection or digital images of items photocopied in this booklet or related to the topic..

Compiled 5/2014 by L S Valentine Copyright©Valentine2014

Q 275
1007

The 1940
EDITION OF THE
E C H O

The **1940 ECHO**

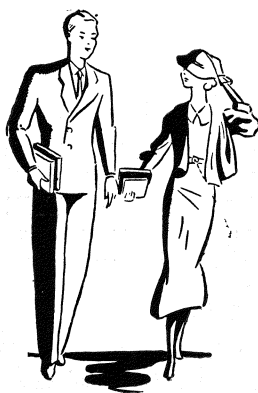
PUBLISHED BY THE SENIORS
WHO PERSONALLY CONDUCT A

Trip Through

UNION FREE HIGH SCHOOL
WILMOT, WISCONSIN

DOROTHY BERGHOLZ
EDITOR

DONALD VAN LIERE
BUSINESS MANAGER





UNION FREE
HIGH SCHOOL



MILDRED M. BERGER

We Pause to Honor



FORTUNATE are the students who, for the past ten years, have had the pleasure and privilege of knowing you. Your ability as a teacher, your efficiency as an organizer, and your wide range of interests have all been sources of inspiration to us. We shall remember you as an understanding and patient friend.

The Purpose of Our Trip . . .

IT is springtime, all nature is alive, "we" are alive; Come! Follow us as we tour the grounds and nod to the familiar faces of friends old and new. It will be much more fun to "be up and doing" than to sit idly here, wondering what new adventures a boring world can hold. Come with us—we'll go up past the office, possibly Mr. Schnurr will be in and we can have a word with him. If he is out, we'll doubtless find Miss Thomas in his place. If we're lucky, we may see the board of education and also drop in on Miss Berger or Mr. Duffy. Of course, we cannot wander far before we encounter Seniors—they're very much in evidence in these halls—you'll enjoy meeting them, too. Some are very pleasant; others will be thoroughly preoccupied, but, at least, all will make good specimen studies. As we pass, we'll see Freshmen peeking out daringly, here and there, and of course, we'll be unable to ignore the Sophomores whose faces are beginning to bear the marks of wisdom and the Juniors whose manner tells us at first glance that they haven't far to go until they "have arrived."

We'll find Miss Dake and Mr. Frank just off the lower hall and, if we hear the blare of bugles and the roll of drums, we can be reasonably sure that Mr. Ende is not far away. We'll not miss the basement, either. Mr. Frey and Miss Bosselman might have something very interesting "cooked up" down there. And if we don't see "Gus" before, we'll find him locking up at closing time.

Well, let's be off.



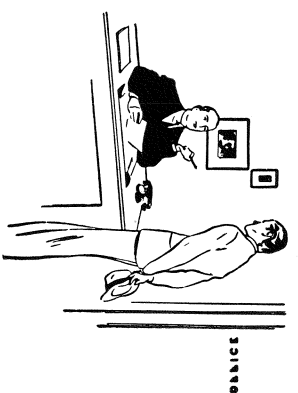
HERE'S OUR ITINERARY . . .

We Meet THE FACULTY

Visit THE CLASSES

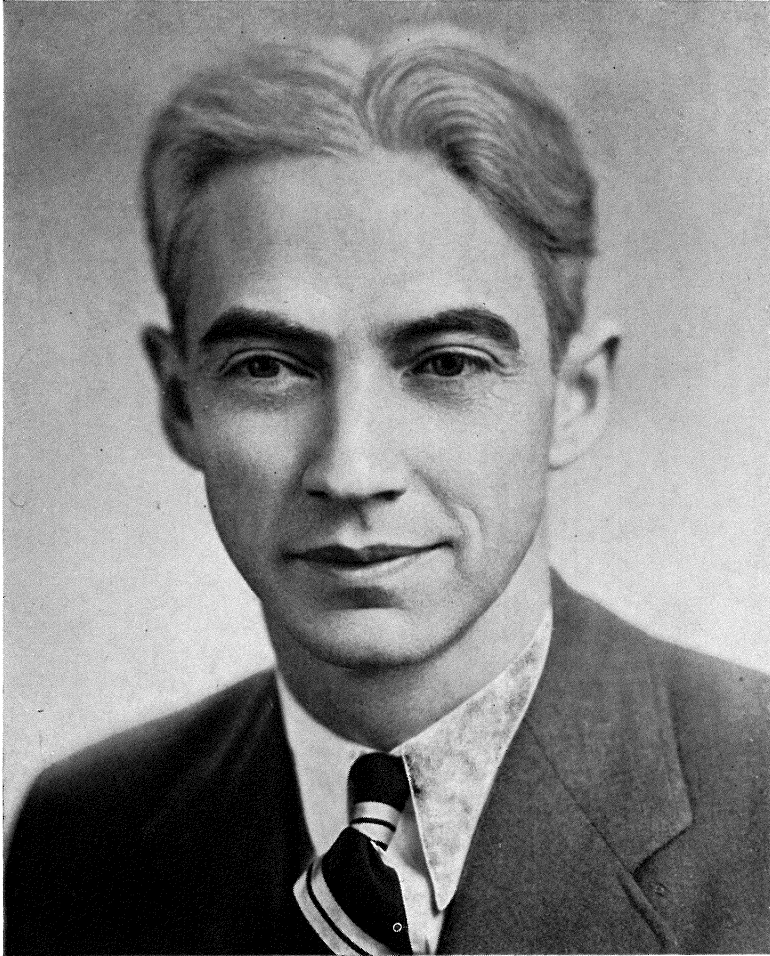
Watch THE ACTIVITIES

Thank THE SPONSORS



We Meet **THE FACULTY**

. . . *And*



MARLIN M. SCHNURR

LET'S stop off first at Mr. Schnurr's office. We understand he has something to tell us concerning the publication of our annual.

We present, Mr. Schnurr:

The publication of this annual marks a departure from a custom which has been in existence for many years. Previously the annual was published every four years, a vote of the student body indicated overwhelming sentiment in favor of producing the book each year. This represents the first book of the yearly series.

The staff is to be congratulated in that it has been able to present a fine book at a greatly reduced cost. This saving in turn was passed on in reducing the cost to sponsors. It is hoped that the policy will be continued and that eventually the book will become entirely self-supporting.

The philosophy of our school is built around two words: education and service. Thus, if this book is to find its place it must add to the education of those producing it and must provide a service for the student body and community. Exactly how these aims are to be completely realized is not known but through conscientious effort and thought and helpful suggestions, the goal will gradually be reached.

Greet THE ADMINISTRATORS

THE type of men elected to a school board have a great influence on the efficiency with which the school is conducted. Each post requires a man who is highly respected and who has no selfish interest in the position.

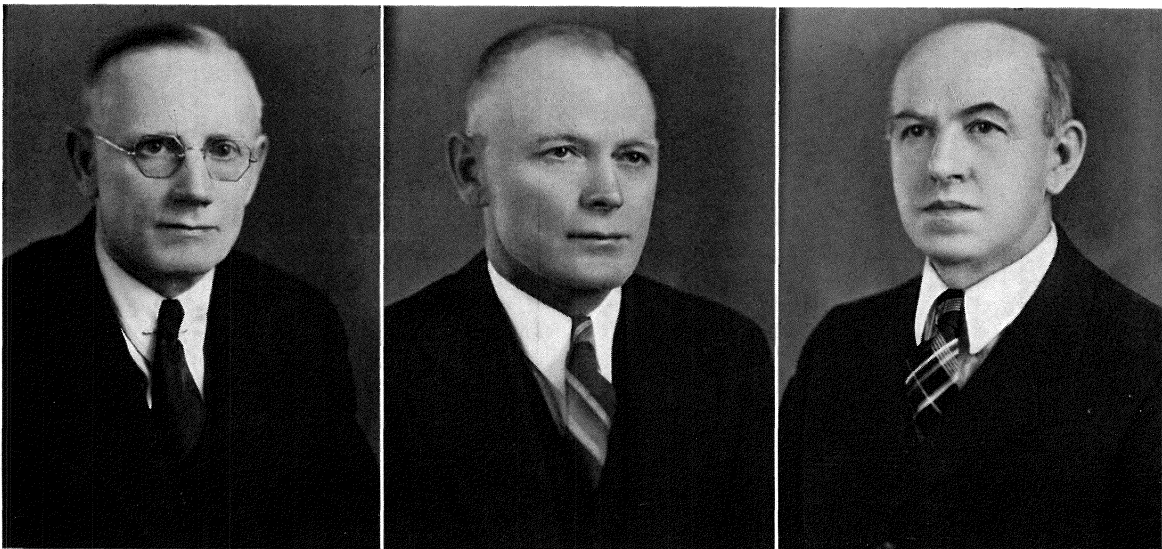
Actions shall always be interpreted in the light of what is best for the school as a whole, and individual desires must be submerged for the benefit of all.

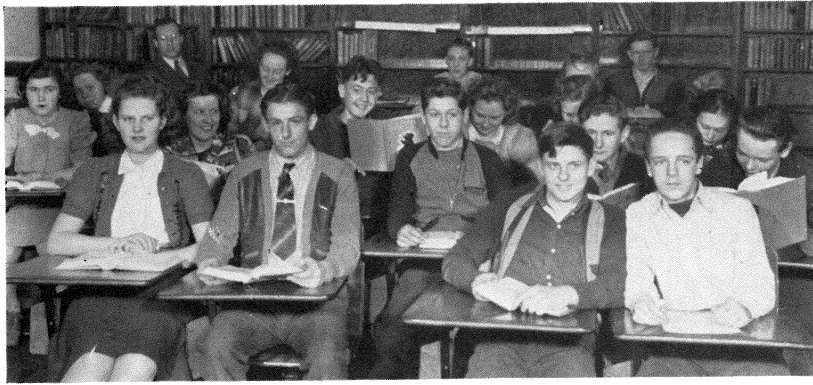
Fortunately, our Board of Education recognized these essentials for successful school operation. As in all other fields, experience adds to the value of the service one can render. These men have served for many years and their efforts are sincerely appreciated.

GEORGE T. DEAN
Treasurer

OTTO SCHENNING
President

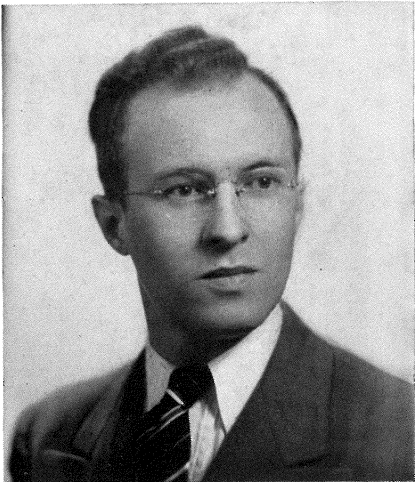
R. C. SHOTLIFF
Clerk





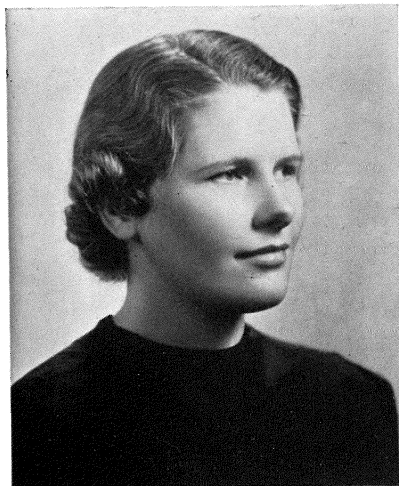
*The FACULTY
Itself and*

HISTORY

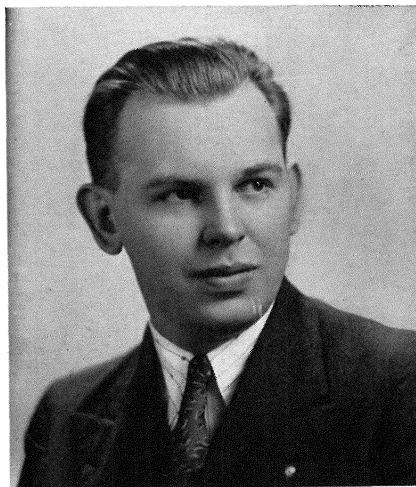


THE Faculty of Wilmot High is very happy to greet the friends of our school. We believe that education is a part of life and that life should be full. In accordance with our philosophy, we offer as broad and varied a curriculum as is possible in a school of Wilmot's proportions while recognizing that experience has taught our society that there are certain fundamentals of educational experience necessary to the development of every individual in a democratically organized society.

HERBERT FRANK
Univ. of Wis., Ph. M.; Kearney, Nebr. State Teachers College, Colo. Teachers, Greeley, English and History.



RUTH BOSSELMAN
Stout Institute, B. S. Home Economics.



RUSSELL ENDE
Milwaukee State Teachers, B. E.; Marquette Univ.; Northwestern Univ. Music, Oral English.



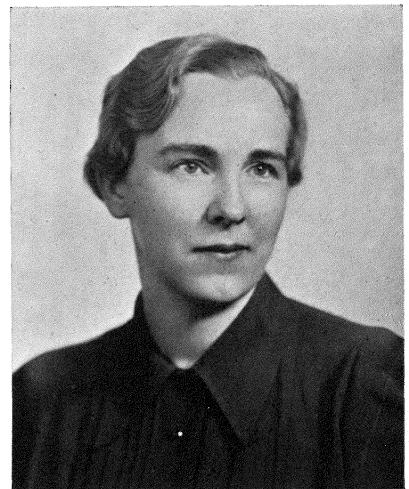
WINNIE DAKE
La Crosse State Teachers, B. E.; Univ. of Wis.; Northwestern Univ. Social Science, Phy. Ed., Librarian.

***Introduces
ITS WORK***

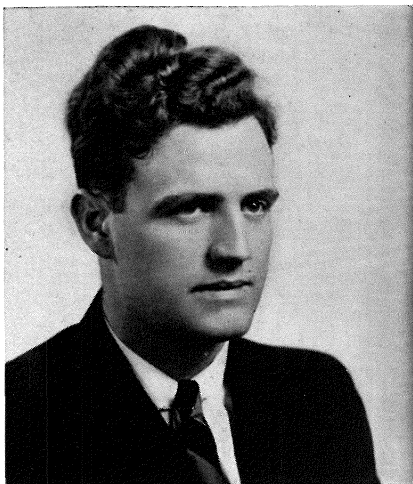


L A T I N

WE believe that education is essentially of a two-fold nature. It is the inherent privilege and duty of every individual to be a producer. This entails the mastery of techniques and skills, of habits and attitudes, as fundamental to the successful accomplishment of this end in our society. No less important in a society of mass production and resultant leisure time activity is the place of every individual as a consumer. Wise consumption is no less important than adequate production. Consequently it is our aim not only to teach the work habits necessary to production but the social habits desirable in consumption.



MILDRED BERGER
Whitewater State Teachers, B. E.; Northwestern Univ., M. A. Commercial.



THOMAS DUFFY
Eau Claire State Teachers, B. E.; Univ. of Wis. Science, Mathematics, Phy. Ed.



RUTH THOMAS
Univ. of Wis., B. A.; Northwestern Univ. English, Latin.



MANNIE FREY
Univ. of Wis., B. S.; Northwestern Univ. Agriculture, Coaching, Phy. Ed.

The Course of Studies in Type

F I R S T Y E A R

*English
Civics
*General Science
Business Science

Food
Plant Husbandry

S E C O N D Y E A R

*English
*World History
Biology
Typing

Clothing
Animal Husbandry
Algebra

T H I R D Y E A R

*English
*American History
Chemistry
Shorthand

Home Management
Farm Mechanics
Geometry

F O U R T H Y E A R

*English
Social Problems
Chemistry

Bookkeeping
Home Management
Farm Economics

Latin I
Latin II
Music—elective—all four years
Physical Education—2 *hours per week
* Required

And IN OPERATION . . .

**CULTURAL
LIBRARY**



**SCIENTIFIC
CHEMISTRY**



**COMMERCIAL
BOOKKEEPING**



**PRACTICAL
HOME ECONOMICS**



**AGRICULTURAL
AGRICULTURE**



We Leave the Faculty and . . .

THE Wilmot High School was built in 1835 on ground donated by Mr. Benham. It consisted of one upstairs room and two rooms downstairs. In 1879 the school was enlarged. In 1904 it became a common district high school and, in 1905, there were ten graduates. In 1922 a petition for a gymnasium was circulated, and a gymnasium was erected. A heating system for this was installed in 1924.

In 1912 parts of the townships of Salem, Randall, and Wheatland, were included in the high school district. Two more rooms were added in 1918, and a modern hot air heating system was installed.

On New Year's morning in 1933 the high school building was completely destroyed by fire. The loss was deeply felt and classes had to be conducted in the gymnasium.

After some discussion it was finally decided to place the new building on the same ground. Construction began in May, 1933, and the building was completed in early fall. Landscaping and laying out of playgrounds and the athletic field took place the following year.

In the fall of 1937 the Home Economics room was completed. In the fall of 1939 a new Agriculture room was built and also a public library was started by the P. T. A.

The enrollment of the school has steadily increased to nearly two hundred students. If the enrollment continues to increase it will soon be necessary to take another step in enlarging the school.



SCHOOL SONG — (Tune—Washington Lee Swing Song)

*And when those Wilmot High boys fall in line,
We're going to sing for them another time,
It's for the school that we all love so well —
We're going to yell and yell and yell and yell and yell
And then we'll fight, fight, fight, for everyone
United all of our games are won,
And then we'll sing, sing, sing, sing, sing again—sing again,
Wilmot High.*



Visit **THE CLASSES**

The SENIORS Tell Their Story

GRADUATION, as it must to all seniors, has beckoned to the class of '40. Four exciting years of school life will end soon, and so we leave this brief history of our school life and good times.

The story begins on a bright fall day in 1936. About forty-five freshmen, a little bewildered, entered the higher threshold of learning at Wilmot High. At our first election we chose Norma Schlax, high keeper of the Frosh. Hardy Schmalfeldt played second fiddle to her. Art Scott was elected secretary and also given the keys to the treasury while Don Vander Zee was the student council representative. Another highlight in this year was when Lorraine Robers was elected queen of the Carnival.

The second year came; the Sophomore Class held another election. We decreed Don Vander Zee, president. That mental luminary, Art Scott, presided in the vice-presidency. Manette Runge wielded a wicked pencil while secretary and Hardy Schmalfeldt became student council representative. We were quite busy putting on our minstrel which turned out to be a success.

The third year came up like a thunder-bolt, when again the students exercised their suffrage and sagaciously reelected Don Vander Zee. Hardy Schmalfeldt became Vice-President. Norma Schlax carried every precinct and became secretary while Manette Runge ably represented us in the Student Council. We were quite busy for a while getting ready for our class play called "Apron String Revolt." Everyone enjoyed it and declared it a success. Spring soon rolled around and we began preparing for our prom. We finally decided on a Hawaiian effect and quite laboriously began making palm trees, monkeys and leis.

The fourth year soon rolled around and again we held our election. Hardy Schmalfeldt, a man with varied abilities, became president. Art Scott, vice-president, Dorothy Bergholz, secretary, and Lorraine Richards, student council representative. We were very proud when Hardy Schmalfeldt was elected king of the Carnival. After this, we dug in and began working on the annual and also selected "Meet the Millionaire" to be our Senior Class play. We naturally are quite busy now getting ready for class night and commencement which will be soon.

Now that it is almost all over, we begin to look back on four years of study and social activities with pleasure, we wish we could relive them again.

Keep Climbing CLASS MOTTO



President HARDY SCHMALFELDT
Vice-President ART SCOTT
Secretary DOROTHY BERGHOLZ
Student Council Representative . . . LORRAINE RICHARDS

CLASS WILL

WE, the class of Nineteen Hundred Forty of Wilmot High School, Kenosha County, in the state of Wisconsin, knowing and realizing that the time of our departure from this realm of learning is now at hand, believing that we are of sound mind, do hereby set forth our last will and testament.

ARTICLE I

We bequeath our characteristics, qualities and ambitions as follows:

Manette Runge leaves her ability to wrestle to Doris Sarbacker.

Arnold Hansen leaves his argumentations and his ability to convince anybody of anything to Eleanor Neinhaus.

Lorraine Robers leaves her sunny disposition and good nature as an example for all who are inclined to grouchiness.

Ten volumes of "The Advantage of knowing How to Make Love" written by Chet Boyington, are left to those who may wish to refer to them.

John Dahl leaves his brains to be used in emergencies only.

Thelma Gauger wills her tactful consideration of others to Virginia Paul.

Hardy Schmalfeldt leaves his Chicago "blonde" to Norman Swartz.

Dorothy Bergholz (treasurer) leaves — on the next train.

Lorraine Richards leaves her red locks to Bob Hirschmiller.

Art Scott leaves his record of achievements as an example for future aspirants for fame and glory.

Glenn Hollister wills his dates with Marge Wange to Stan Hubbard.

Joyce Robinson wills her typing ability to Milton Frank.

Anne Carey leaves her Irish temper to Evelyn Evans.

Lois Gates leaves her smile — guaranteed to outlast all kinds of weather — to Dorothy Globis.

Agnes Nett wills her independence to Frankie Derler.

Margaret Richter wills her "diamond" to Anna Gillmore.

Norma Schlax leaves her place in the "Roaring Six" to Janet Jensen.

Ruth Roepke leaves Lenard Shenk in the good care of his sister.

To the Freshman class in general, Avis Voss wills her quietness.

Eunice Williams leaves her scholastic ability to John Hefner.

Amy Pringle leaves her ability to wear "makeup" to Cora Mizzen.

Jo Lake wills her friendship with Nelva Ehlert to George Breul.

Lila Gillmore leaves her quiet ways to Ruth Vogel.

Virginia Neumann leaves her singing ability to Dave Retzinger.

Arbutus Schultz wills her giggle to Esther Merten.

Don Vander Zee wills his friendship with Dorothy Smith to Pete Wilde.

Art Wellman wills his ability to blush to Keith Hegeman.

Joyce Newell leaves her quiet efficiency to Kay Carey.

Dick Sheahan leaves his ability to bluff to Al De Bell.

Warren Pohlman leaves his Chemistry knowledge to Bob Elverman.

Natalie Sokalski wills her good grades to her brother.

Warren Gillmore wills his driving ability to Connie Merten.

Betty Vincent leaves her drag with Mr. Ende to Charlie Rudolph.

Don Van Liere wills his friendship with Ev Sarbacker to Harry Swensen.

Elenor Sorensen wills her place in the car at noon to Louise Nelson.

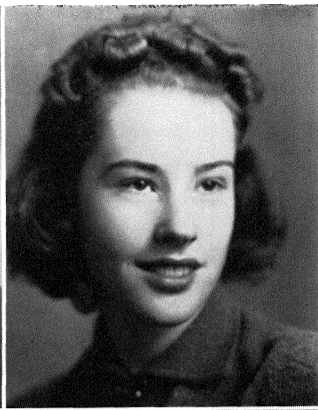
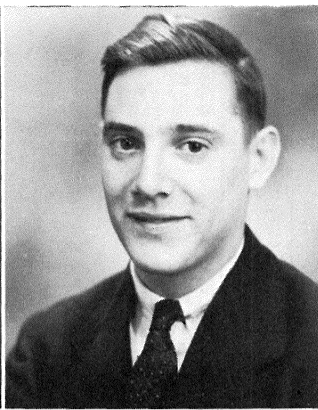
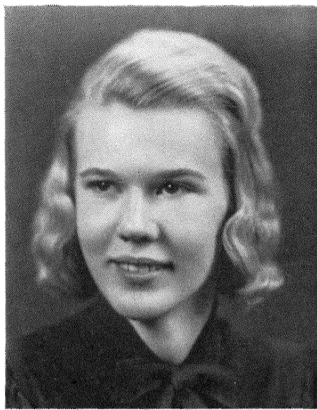
Wesley Holdtdorf leaves — a little sophomore.

ARTICLE II

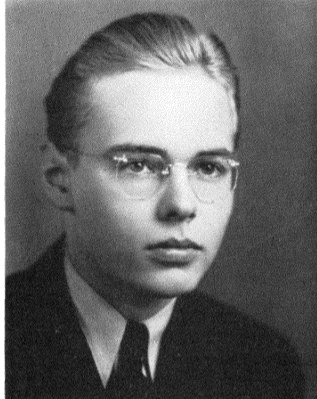
To the juniors we will our inability to see the underclassmen: To the sophomores we will the use of the library so they may be intellectually fit to graduate after due course: To the freshmen we will a pair of green stilts so that they can see what is going on in the upper classes.

ARTICLE III

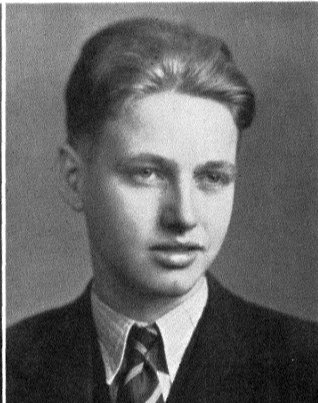
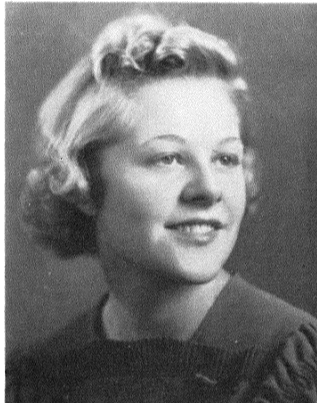
We do hereby nominate Mr. Schnurr, our principal, to execute this, our last will and testament.



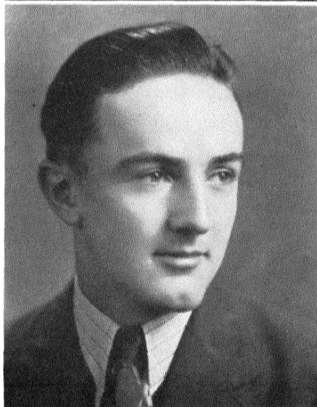
DOROTHY BERGHOLZ ✓
 CHESTER BOYINGTON ✓
 ANNE MARIE CAREY ✓



JOHN DAHL
 LOIS GATES ✓
 THELMA GAUGER ✓



LILA GILLMORE ✓
 WARREN GILLMORE
 ARNOLD HANSEN



GLEN HOLLISTER ✓
 WESLEY HOLTDRF
 JOSEPHINE LAKE ✓

*"An industrious, willing worker is she,
To the door of success she holds the key."*

*"Full of fun and mischief, too,
Doing things he shouldn't do."*

*"She's little, but she's wise,
She's a terror for her size."*

G. A. A. 2-3-4, President 4; Girls Chorus 2-3; Minstrel 2; Commercial 2-3-4, Assistant Editor and Editor 3-4; School Treasurer 3-4; Echo Editor 4; Class Secretary and Treasurer 4; Operetta 2-3; Received spade 3; Librarian 4.

B. A. A. 1-2-3-4; F. A. A. 1-4; Minstrel 2; Dramatics 3; Football 3-4; W. Club 4; Boys Chorus 1-2-3; Judging Team 1-2; Operetta 1-2-3; Class Play 3-4.

G. A. A. 1-2-3-4; Girls Chorus 1-2-3; Minstrel 2; Class Play 3-4; Dramatics 1-2-3-4; Commercial 2-3; Band 1-2-3-4; French Club 4; Operetta 1-2; Orchestra 1.

*"He does his task from day to day,
And meets whatever comes his way."*

*"Her winning smile and cheerful air,
Make her as sweet as she is fair."*

*"It's nice to be natural
When your naturally nice."*

Minstrel 2; B. A. A. 1-2-3-4; Boys Chorus 1; Operetta 1.

Girls Chorus 1-2-3-4; Minstrel 2; Student Council 4; Operetta 1-2-3-4; Orchestra 1; Carnival Queen 3; Class Play 4.

Girls Chorus 1-2-3; Minstrel 2; Dramatics 2; Operetta 1-2.

*"Her ways are ways of pleasantness
And all her paths are peace."*

*"No sinner or saint, perhaps,
But he's the very best of chaps."*

*"I'm always open to conviction,
But I would like to see the man who can
convince me!"*

Girls Chorus 1-2-3-4; Minstrel 2; Home Ec. 4; Operetta 1-2-3-4.

B. A. A. 1-2-3-4; F. F. A. 1-2; Minstrel 2; Boys Chorus 1-2-3-4; Judging Team 3-4; Operetta 1-2-3-4.

B. A. A. 1-2-3-4; F. F. A. 1-2; Boys Chorus 1-2; Judging Team 4; Minstrel 2.

*"Happy-go-lucky, fair and free
Nothing there is that bothers me."*

*"Ah, pretty maiden, what shall it be,
'Onward Christian Soldiers' or 'Abide With
Me?'"*

*"No worry does she know
She's full of pep and go."*

B. A. A. 3-4, Secretary 4; Football 4; Basketball 3-4; Baseball 3-4; W. Club 3-4, Secretary 4; Class Play 4.

B. A. A. 1-2-3; Minstrel 2; Football 4; Band 3-4; Boys Chorus 1-2-3-4; Operetta 1-2-3-4; Class Play 3-4.

G. A. A. 1-2-3-4; Girls Chorus 1-2-3; Minstrel 2; Dramatics 1-2-3; Operetta 1.

G. A. A. 1-2-3-4; Girls Chorus 1-2-3-4; Minstrel 2; Class Play 3; Dramatics 1-2-3-4; Band 1-2-3-4; Vice-President 4; Concert Chorus 3-4; Home Ec. 3-4; Secretary 4; Operetta 1-2-3-4; Cheerleader 2-3-4; Echo Music Editor.

G. A. A. 1-2-3-4; Girls Chorus 1; Minstrel 2; Dramatics 1-2-3-4; Commercial 3-4; Band 2-3-4; Home Ec. 4; Student Librarian 3.

B. A. A. 2-3-4; Football 3-4; Baseball 3; W Club 4; F. A. A. 4.

G. A. A. 1-2; Girls Chorus 1-2-3-4; Minstrel 2; Dramatics 4; Band 3-4; Concert Chorus 3-4; French Club 4; Operetta 1-2-3-4.

G. A. A. 2-3; Dramatics 4; Home Ec. 4; President 4; Chorus 1-2-3-4; Commercial 2; Student Council 4; Concert Chorus 3-4.

G. A. A. 1-2-3-4; Girls Chorus 1-2-3-4; Minstrel 2; Student Council 4; Class Play 3; Dramatics 1-2-3-4; Secretary 3; Commercial 3-4; Band 1; Home Ec. 4; Student Council Representative 4; Operetta 1.

G. A. A. 1-2-3-4; Girls Chorus 1-2-3-4; Dramatics 1-2-3-4; President 3; Vice-President 4; Commercial 4; Band 1-2-3-4; President 3; Secretary 4; Operetta 1-2; Carnival Queen 1.

Girls Chorus 2; Commercial 2-3-4; Paper Staff 3-4; Minstrel 2; Echo Staff 4; Operetta 2; Librarian 4.

Girls Chorus 4; Commercial 4; Minstrel 2; Home Ec. 4.

G. A. A. 1-2; Girls Chorus 1-2-3-4; President 3; Minstrel 2; Student Council 3-4; Class Play 3-4; Dramatics 1-2-4; Commercial 1-2-3-4; Concert Chorus 3-4; Vice-President 3; French Club 4; President 4; Operetta 1-2-3.

G. A. A. 1-2-3-4; Girls Chorus 1-2-3; Minstrel 2; Dramatics 1-2-3-4; Commercial 1-2-3-4; Staff 1-3-4; Band 1-2-3-4; Home Ec. 3-4; Secretary 3; Vice-President 4; Operetta 1-2-3; Orchestra 1; Echo Staff 4; Class President 1; Class Secretary 3.

Boys Chorus 1-2-3; B. A. A. 1-2-3-4; Student Council 4; W Club 3-4; Concert Chorus 3; Band 1-2-3-4; Dramatics 1-2-3; Minstrel 2; Class Play 3-4; Baseball 1-2-3-4; Basketball 2-3-4; Student Council 1-2-3-4; Carnival King 4; Class President 4; Vice-President 1; Student Council 2; Vice-President 3.

*"A pretty way, a winning smile,
Dressed so neat and right in style."*

*"A loyal companion, an excellent friend,
A good, earnest worker and true to the end."*

*"Shall I, wasting in despair
Die because of a maiden fair?"*

*"Life was made to be enjoyed
She by nothing is annoyed."*

*"She was pretty to walk with, witty to
talk with and pleasant to think on."*

*"Its a short, short life we live here,
So I'm living while I can."*

*"Her gentle speech and modest ways
Led others to accord her praise."*

*"She did with a cheerful will,
What others talked of while their hands
were still."*

*"A quiet girl and studious, too,
Give her all the credit that is due."*

*"She's a gay and bonnie lass
The merry-maker of her class."*

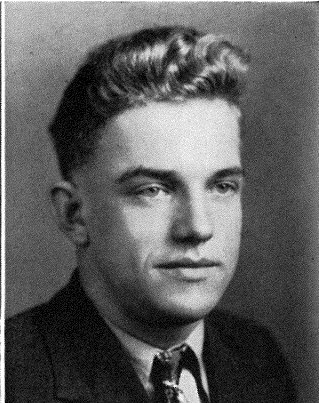
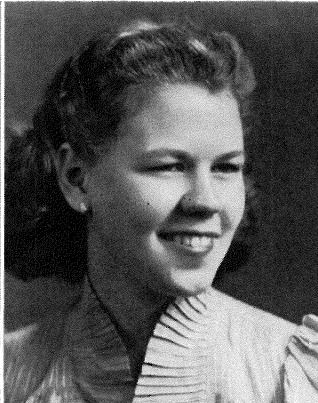
*"I'm a little prairie flower
Growing wilder hour by hour."*

*"His friends they are many,
His foes, are there any?"*

VIRGINIA NEUMANN

JOYCE NEWELL

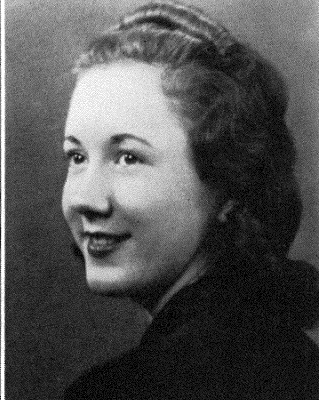
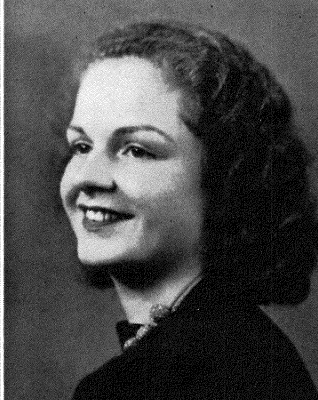
WARREN POHLMAN ✓



AMY PRINGLE

LORRAINE RICHARDS ✓

MARGARET RICHTER



LORRAINE ROBERS ✓

JOYCE ROBINSON

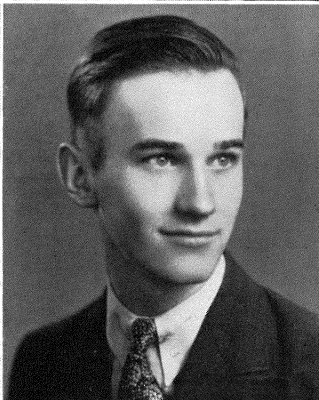
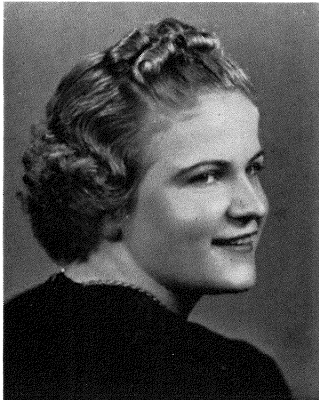
RUTH ROEPKE ✓

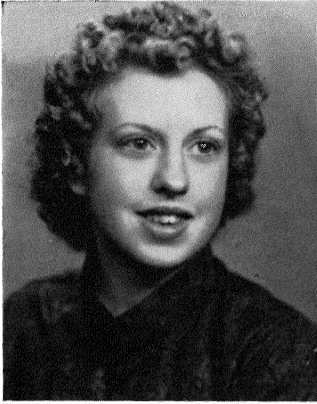


MANETTE RUNGE ✓

NORMA SCHLAX

HARDY SCHMALFELDT ✓

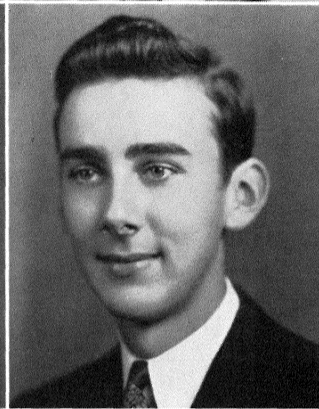
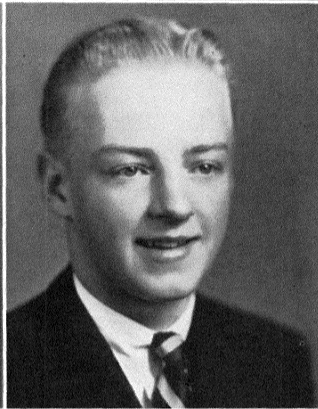




ARBUTUS SCHULTZ

ARTHUR SCOTT

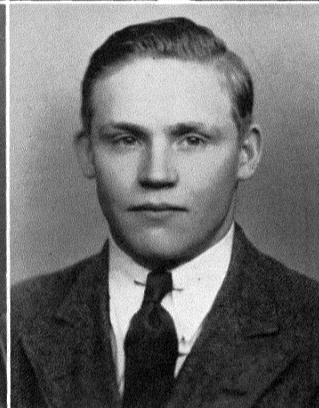
NATALIE SOKALSKI



ELENOR SORENSEN

DONALD VANDER ZEE ✓

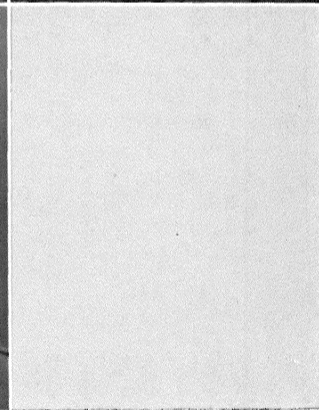
DONALD VAN LIERE ✓



BETTY VINCENT ✓

AVIS VOSS

ARTHUR WELLMAN ✓



EUNICE WILLIAMS ✓

*"She was made for happy thoughts
For playful wit and laughter."*

*"He likes to tease, he likes to kid
He wants to please and always did."*

*"Lots of initiative and pep;
That's this girl, clever? You bet!"*

*"A ready wit and happy smile
An eye that sparkles all the while."*

*"A happy mind, from care set free,
Why aren't they all contented like me?"*

*"Don sure has a lot to do
With the band and Echo and you know who."*

*"Never to busy to join in fun
Allways on hand when there's work to be
done."*

*"Quiet? Talkative? No just a happy
mixture of the two."*

*"A little nonsense now and then
Is relished by the most of men."*

*"To every day she brings good cheer
And so we like to have her near."*

G. A. A. 2-3-4; Girls Chorus 2-3-4, Secretary 4;
Minstrel 2; Band 1-2-3-4; Concert Chorus 4;
Home Ec. 3-4; Operetta 3-4.

Minstrel 2; Student Council 4, President 4;
Class Play 3-4; Dramatics 4; B. A. A. 1-2-3-4,
Vice-President 4; Football 2-3-4; Basketball
1-2-3-4; F. F. A. 1-2-3; Band 2; W Club 3-4;
Boys Chorus 1; Operetta 1; Echo Athletic Edi-
tor 4.

G. A. A. 1-2-3-4; Girls Chorus 1-2-3-4; Drama-
tics 2-3-4; Commercial 4; Home Ec. 4; Operetta
1; Class Play 4.

G. A. A. 1-2; Girls Chorus 1-2-3-4; Minstrel 2;
Home Ec. 4; Operetta 1-2-3-4.

Minstrel 2; Student Council 1; Class Play 3-4;
B. A. A. 1-2-3-4, President 4; Football 3-4;
Baseball 1-2-3-4; Basketball 2-3-4; F. F. A.
1-2-3; W Club 3; Boys Chorus 1-2; Judging
Team 2-3; Operetta 2; Class President 2-3;
Received Spoon 3.

Minstrel 2; Student Council 4, Vice-President 4;
Class Play 3-4; Dramatics 3-4; B. A. A. 1-2-3-4;
Band 1-2-3-4; Boys Chorus 1-2-3-4, Secretary 3;
Concert Chorus 3-4, Vice-President 3; Operetta
1-2-3-4; Echo Business Manager 4.

G. A. A. 1-2-3-4; Girls Chorus 1-2-3-4; Minstrel
2; Student Council 3-4; Class Play 3-4; Drama-
tics 1-2-3-4, Secretary 4; Commercial 1-2-3-4,
President 3-4; Band 2-3-4, Secretary 3, Presi-
dent 4; Concert Chorus 2-3-4, Secretary 4; Op-
eretta 1-2-3-4; Librarian 3-4; Echo Junior Edi-
tor 3, Assistant Editor 4.

Girls Chorus 1-2-3; Minstrel 2; Dramatics 1;
Operetta 1-2.

Minstrel 2; Class Play 3-4; B. A. A. 1-2-3-4;
Football 3-4; W Club 4; Boys Chorus 1; Oper-
etta 1.

G. A. A. 1-4; Girls Chorus 1-4; Minstrel 2;
Commercial 4; Home Ec. 4; Operetta 1; Libra-
rian 3.

OTHER SENIORS

AGNES NETT
DICK SHEAHAN
GAIL SIMPSON

The JUNIORS Speak Up, Too . . .

WHO'S WHO

MUSIC

Ardys Hegeman
Harry Swenson
Evelyn Sarbecker
Anna Mae Shotliff
Keith Hegeman
Billy Meinke

DRAMATICS

Bob Elverman
Virginia Paul
Carlista Dean
Ken Jeffris

SCHOLARSHIP

Ardys Hegeman
Eunice Stoxen
Lenard Schenk
Harry Swenson
Keith Hegeman
Earl Richter
Mary Merten

SERVICE

Ardys Hegeman
Norman Stockwell
Mary Hasselman
Dorothy Smith
Mary Merten

ATHLETICS

John Hefner
Earl Richter

JUNIOR CLASS

First Row—Vera Ingwerson, Helen Kohout, Betty Church, Marles Gauger, Dorothy Wellman, Margaret Peterson, Patricia Madden, Naydean Wertz, Addie Davis, Dorothy Smith, Eleanor Forster, Virginia Otto, Eleanor Nienhaus. **Second Row**—Betty James, Lillian Chernick, Eleanor Schmidt, Bernice Fischer, Bud Appel, Bob Hirschmiller, Mr. Frank, Earl Richter, Herbert Kolmos, John Hefner, Doris Hansen, Eunice Stoxen, Virginia Paul, Carlista Dean, Mary Hasselman. **Third Row**—Leland Stohr, Jack Reyer, Mildred Brooks, Mary Merten, Evelyn Sarbecker, Dan Zelinger, David Retzinger, Lawrence Fait, Anna Mae Shotliff, Ardyce Hegeman, Elaine Vander Zee, Bob Elverman, Dick Schenning. **Fourth Row**—Billy Meinke, Charles Solterman, Louis Oetting, Stanley Hubbard, George Bruel, Lenard Schenk, Raymond Newbury, Harry Swenson, Keith Hegeman, Ken Jeffris, Charles Rudolph, Lloyd Baysinger, Norman Stockwell.



JUNIOR CLASS OFFICERS

President BOB ELVERMAN
Vice-President HERB KOLMOS
Secretary JOHNNIE HEFNER
Student Council DOROTHY SMITH

ON September 7, 1937, there appeared at the Wilmot Union Free High School, a group of somewhat bewildered young boys and girls. This group was the present self-assured Junior Class.

The first opportunity for this group to assemble as one body was at its first class meeting. From its ranks, the members chose Bob Elverman, Lloyd Baysinger, and Evelyn Sarbacker officers to lead us, the present members, down the somewhat obscure by-path of our year as "greenies."

The major event to take place in our lives as freshmen was initiation by the Sophomores. As a whole our class stood up well under the taunts and jokes of the upper classmen, taking "it" in good humor. Returning good for evil, we gave a party for the Sophomores.

A goodly number of us were musically inclined, to Mr. Ende's delight, and went out for the band. Also we had members who made their bids in the field of athletics to uphold the prestige of Wilmot High. Spring arrived before we knew it bringing our first year at Wilmot to a close.

The following fall found our class once more back on the trail with high hopes and ambitions for the coming year. We were no longer green "freshies" but were now mighty sophomores with a new group of freshmen to ridicule. That year we elected Earl Richter, Elaine Vander Zee, Ardys Hegeman, and Bill Davis as officers.

Instead of initiation we took pity on the Freshmen and gave a party for them.

The first real chance our class had to work and cooperate together as a body was in the production of the minstrel which we gave in March. In the ticket campaign, the boys were pitted against the girls with the losing side giving a party for the winning side. As the girls overwhelmed the boys in the number of tickets sold, the boys were to give the party duly and legally held in the County Park in May.

June soon rolled around bringing our sophomore year to a close.

The summer vacation went swiftly and September came. We were now Juniors and looked down on the lower classmen with a full measure of scorn.

In the fall of 1939, we elected Bob Elverman, Johnnie Hefner, Herb Kolmos, and Dorothy Smith as our officers to uphold the prestige of the class in the coming year.

Our class was now playing an important part in the functions of the school. We were well represented first on the athletic teams, music groups, and other organizations.

One of the most important events of the year was the Junior Class Play. The play, "Relatives By Affection," was given March 8th before a goodly crowd.

We now turned our attention to the presentation of our assembly program. Members of our class having talent offered their services for the common cause.

We are now looking forward to the "prom" which we hope to make a huge success.

The SOPHOMORES' Story . . .

WHO'S WHO

MUSIC

Don Luke
Andy Anderson
Evelyn Evans
Marge Wang

DRAMATICS

Louis Pepper
Marge Wang
Bob Robinson
Anna Gilmore

ATHLETICS

Louis Pepper
Norman Schwartz
Pete Wilds
Andy Anderson

SCHOLARSHIP

Evelyn Evans
Richard Robers
Anna Gilmore

SERVICE

Bob Robinson
Andy Anderson
Dick Robers

SOPHOMORE CLASS

First Row—Catherine Schenning, Margaret Besch, Rose Mary Sarbacker, Doris Neuman, Betty Stoxen, Bob Robinson, Letty Church, Ruth Elfers, Connie Merten, Johanna Van Schlocteren. **Second Row**—Gloris Peterson, Lorraine Hollencamp, Shirley Axtell, Patsy Boyington, Dolores Moran, Mr. Duffy, Nelva Ehlert, Dorothy Globis, Bernice Forehan, Edna Hansen, Lucille Scott. **Third Row**—Marge Wange, Marie Richter, Janet Jensen, Howard Brown, Ray Hirshmitter, Milton Frank, Edward Retzinger, Tom Apple, Frank Sheahan, Evelyn Evans, Anna Gilmore, Doris Sarbacker. **Fourth Row**—Pete Wilde, Eugene Vincent, Dick Robers, Bob Walker, Ray Vogel, Louis Pepper, Andy Anderson, Lyle Nelson, Don Luke, John Elsey, Gaylord Maleski, Norman Schwartz.



SOPHOMORE CLASS OFFICERS

President DICK ROBERS
Vice-President EDNA HANSEN
Secretary EVELYN EVANS
Student Council ANDY ANDERSON

THE following will concern the chronicles of the Sophomore Class of 1940: In September, 1938, fifty unfamiliar "greenhorns" known as Freshmen enrolled in Wilmot High School, but when June arrived there were approximately forty-seven survivors.

Mr. Frank and Miss Berger were our faculty advisors. By popular vote Marge Wange was elected as class president; Evelyn Evans was elected vice-president; Janet Fiesel was elected secretary-treasurer; and Arthur Carpenter was chosen as student council representative. These officers proved to be very efficient in their class administration. The candidates for carnival king and queen were Dick Robers and Edna Hansen. The Sophomores welcomed the Freshmen with a dance, but no initiation was held.

When spring came, the class presented its assembly program. The program was put over with a "bang" and we dare say it was the best assembly program given.

The year closed quietly and until September the Wilmot Union Free High School was quiet again.

When September of 1939 arrived there were several missing from the ranks of the present Sophomore Class, but there also were several new additions. At the first class meeting, class officers were elected. Dick Robers was elected president; Edna Hansen, vice-president; Evelyn Evans, secretary-treasurer; and Andy Anderson was elected student council representative. Mr. Duffy was to be our class advisor. Andy Anderson and Marge Wange were elected as candidates for carnival king and queen.

Initiation for the newly arrived freshmen was held and on the evening of the same day a dance was given in honor of the Freshmen.

The second task was putting on a show for the Carnival. Mr. Duffy worked hard to make it a success and he was richly rewarded.

The third and biggest task was to put on a minstrel. The class decided to substitute a musical comedy called "Apoplexy for the Teacher" for the traditional minstrel. A committee of four students, Miss Dake and Miss Barnes, and Mr. Ende worked out a very successful play.

When the Sophomore Class presented its assembly program, it repeated its last year's triumph with a big success, a German band farce-comedy.

The assembly program was the last big class undertaking for the Sophomores. As we go to press the class is helping to put out this annual and after that we will just wait for old "Father Time" to convert us into juniors.

The FRESHMEN Have A Story Too . . .

WHO'S WHO

MUSIC

June Hartnell
Bob Manning
Myrtle Jerde

SPECIAL

Phyllis Taylor,
Carnival Queen

SCHOLARSHIP

Raymond Griffin
Viola June Hartnell
George Huntoon
Louise Nelson
Charlotte Pacey
Velma Richards
Grace Waldo

FRESHMAN CLASS

First Row—Shirley Jeffris, Mary Jane Davis, Cora Mizzen, Dorothy Nienhaus, Arlene Wicks, Jewel McManus, Margaret Waldo, Myrtle Jerde, Elaine Allen, Ruth Richter, Kay Carey, Ruth Vogel. **Second Row**—Don Pringle, John Sokolski, Charles Kohout, Harriet Sakalowski, Francis Dix, Charlotte Hollister, Evelyn Robers, Grace Waldo, Francis Ficht, Shirley Washoak, Phyllis Taylor, Bob Sheahan, George Fait, Ken Hackbarth, Mr. Frey. **Third Row**—Peter Retzinger, Bob Manning, Dick Allen, Frank Derler, Shirley Hansen, Velma Richards, Charlotte Pacey, Bernice Elverman, June Hartnell, Louise Nelson, Esther Merten, Lenard Fischer, Herbert Bernhoft, Willis Freeman. **Fourth Row**—Raymond Stoxen, Warren Kanis, Willard Bryant, Bob Sarbacker, Ray Griffin, Alfred De Bell, Leon Lois, Jim Mitchell, Vernon Edwards, Dick Simpson, George Huntoon, Lloyd Brinkman, Milton Schenning, Lloyd Terry.



FRESHMEN CLASS OFFICERS

President PHYLLIS TAYLOR
Secretary DICK ALLEN
Student Council LENARD FISCHER

THERE was a great tumult on September 5, 1939 in Wilmot High School. It was the first day of school. Fifty-three freshmen entered the school on that day. We were very "green" and some of us were just a bit frightened.

After the first bell rang and all was quiet we heard those baffling rules and regulations which we were to hear so often later. Then there was registration and we went to some of our classes. All through the day we listened with awe to our new teachers and also to some very superior upper classmen.

But such was not to be our life for long. We elected Phyllis Taylor as class president and John Sokolski as secretary-treasurer. We also elected Lenard Fischer as our representative to the student council. Our class members joined B. A., G. A. A., The Future Farmers, and the Home Economics Club. Many of them took part in musical activities, including band, girls' chorus and boys' chorus.

At one of our first class meetings a sophomore class member came with a message. On a certain day we were to come to school dressed in queer clothes and prepared for the worst. It was initiation! As the Freshmen were brave fellows, they survived the day and by night were quite ready for the dance given in their honor. On February 16 we repaid the Sophomores with a dance given in their honor.

When the time for the school carnival arrived, the Freshmen gave their wholehearted cooperation. Competition in selling tickets was keen, but on the night of the carnival we had the honor of having our candidate, Phyllis Taylor, crowned queen of the carnival. Our candidate for king, Frank Derler, served as gentleman in waiting. The carnival was a real success.

Later in the year we welcomed four more freshmen to our class. With their help we put on a very successful assembly program.

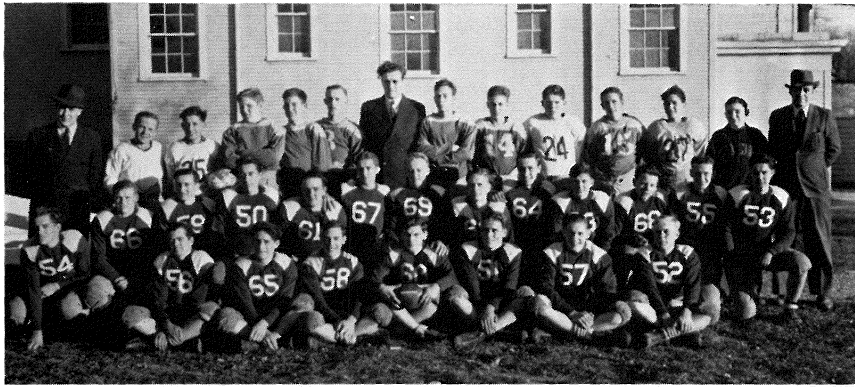
And so, as we, "the Class of '43" leave the Freshman class to become sophomores, we will always remember our freshman year as one of hard work, fine achievements, and lots of fun.

Classmates All!



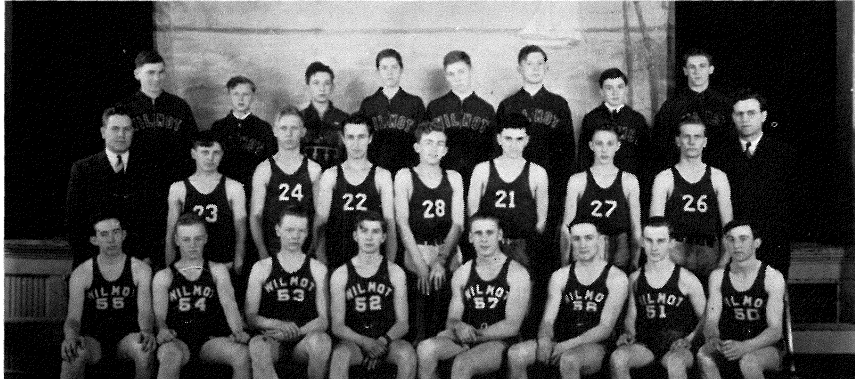
1. Won't you come over and play?
2. What! Where's Amy?
3. Studying hard?
4. Inseparable
5. Three Musketeers!
6. Waiting for the girl friends!
7. Say it with flowers!
8. One of our sweet flower-girls.
9. He-man
10. And the music goes round and round
11. Beat it out, Amy!
12. What, No Dotty?
13. Posin!
14. Bright and Smilin'
15. A big horn for a little girl
16. Quiet, for once!
17. Waitin' at the gate
18. Working Hard.
19. Mr. and Mrs. ?
20. Amen!!!!
21. Here's your chance, girls!!
22. Part of our gang.
23. Milkmen's Association.
24. What, again?
25. Happy-go-lucky
26. The Bristol Gang
27. Lardy
28. Hard at work
29. The Prof.
30. The Maestro!
31. The Mighty Seniors!!
32. Don Juans (ladies' men)

The ATHLETES Perform . . .



FOOTBALL SQUAD

First Row — Warren Gillmore, Charley Solterman, Chet Boyington, John Hefner, Louis Oetting, Ray Newbury, Dick Schenning. **Second Row** — Warren Pohlman, Art Wellman, Art Scott, Earl Richter, Glen Hollister, Norman Swartz, Don Vander Zee, Herbie Kolmos, Andy Anderson, Pete Wilds, Louis Pepper, Bob Elverman, Bob Schmidt. **Third Row** — Mr. Frey, John Sokalski, Frank Derler, Al De Bell, Leon Lois, Wesley Holdorf, Mr. Duffy, James Mitchell, John Elsey, Willard Bryant, Frank Sheahan, Dick Allen, Charley Kohout, Mr. Schnurr.



BASKETBALL SQUAD

First Row — Earl Richter, Don Vander Zee, Louis Pepper, Jack Reyer, Louis Oetting, Glen Hollister, Hardy Schmalfeldt, Art Scott. **Second Row** — Mr. Frey, Pete Wilds, Ray Vogel, Andy Anderson, Lawrence Falt, Stan Hubbard, John Elsey, Herbert Kolmos, Mr. Duffy. **Third Row** — John Hefner, George Falt, Frankie Derler, Bob Sarbacker, Eugene Vincent, Leon Lois, Charley Kohout, Norman Schwartz.



BASEBALL SQUAD

Front Row — Norman Swartz, Earl Richter, Glen Hollister, "Skeets" Oetting, Warren Pohlman, Hardy Schmalfeldt, Mr. Duffy. **Back Row** — Pete Wilds, Andy Anderson, John Hefner, Don Vander Zee, Herbert Kolmos, Bob Robinson.



W CLUB

Front Row — Art Scott, Hardy Schmalfeldt, Herbie Kolmos, Norman Swartz, Aaron Merten, Earl Richter, Charley Salterman, Don Vander Zee. **Back Row** — Mr. Frey, Art Wellman, John Hefner, Andy Anderson, Louis Pepper, Glen Hollister, Warren Pohlman, Chet Boyington, Bob Elverman, Mr. Schnurr.

FOOTBALL . . .

Waterford 14	Wilmot	6
Mukwanago 0	Wilmot	13
Union Grove 0	Wilmot	14
Rochester 26	Wilmot	0
Norris Farm 6	Wilmot	21
East Troy 0	Wilmot	21

When the season started, our chances did not look so good inasmuch as there were only four lettermen back from the previous year. Under the coaching of Coach Frey and the assistance of Coach Duffy, the squad quickly rounded up into a good team. Our start was poor, for we lost our first game and to make matters worse one of our regular ends was put out for the rest of the season with an operation. However, in our next game we did what no Wilmot High School team had done before, beat Mukwanago. We played two games under lights. This was Wilmot's first experience with night games. We thought it was a great success.

The team will lose seven regular players by graduation: Art Wellman, Warren Pohlman, Aaron Merten, Art Scott, Don Vander Zee, Glen Hollister and Chet Boyington are leaving.

BASKETBALL . . .

Waterford 4	Wilmot	7
East Troy 12	Wilmot	19
Rochester 14	Wilmot	0
Norris Farm 23	Wilmot	16
Mukwanago 14	Wilmot	21
Waterford 9	Wilmot	13
East Troy 5	Wilmot	31
Rochester 22	Wilmot	13
Norris Farm 28	Wilmot	18
Union Grove 24	Wilmot	12
Mukwanago 23	Wilmot	17
Union Grove 23	Wilmot	11

At the start of the season of basketball there was a squad of inexperienced players with only three lettermen from the previous year. The team shaped up rapidly under Coach Frey. The team was strong on defense but weak on offense. Although the scoring record of the team was not high, it played a clean game and was always considered a threat.

We look forward to a much better season next year because it takes time to get used to the style of ball coached and the boys back for next year will be used to the style coached by Manney Frey. So keep your attention on next years fighting basketball team and we do not think you will be disappointed.

We regret the losing of the four seniors on the team and wish they were back next year. The seniors are Don Vander Zee, Art Scott, Hardy Schmalfeldt, and Glen Hollister.

BASEBALL . . .

Waterford 2	Wilmot	8
East Troy 7	Wilmot	11
Norris Farm 8	Wilmot	36
Waterford 6	Wilmot	7
Mukwanago 0	Wilmot	6
Rochester 3	Wilmot	7
Norris Farm 0	Wilmot	14
Mukwanago 4	Wilmot	5
East Troy 7	Wilmot	6

The spring found us headed for another baseball championship under the direction of Coach Duffy. To start us off, Skeets Oetting pitched a no-hit game against our traditional rival, Waterford. We won the conference championship. Our success was due to the competitive spirit of the players and the good cooperation at all times, although the individual skill of some of the players helped us over the tough spots.

Merlin Jahns, Ken Schenning, Don Burmeister, and Charles Goff are regulars who will not return next season. However, we have a goodly squad of players coming back and we need not be weak in any position. We are hoping for another championship next season.

"W" CLUB . . .

President	JOHN HEFNER
Vice-President	HARDY SCHMALFELDT
Business Manager	GLENN HOLLISTER
Student Council	ART SCOTT

Look! There is another W. What is a W? How do you get one? What do they mean to person owning one?

A "W" is the prize offered for athletic achievement and anyone winning a letter is eligible to joint the organization honoring lettermen, the W Club. But the last question asked is "What do they mean the wearer?" Well, to answer that you will have to earn a letter yourself and be eligible for the W Club to know the thrill and keen feeling of self-pride which comes with the earning of a letter or W.

The band is of fifty-two pieces and is playing its first year in Class C classification. Last year the band won a first division award in concert and marching. It sight read in a higher classification and won a second award.

Many solo and ensemble players entered the festival from the band and fared very well last year. Many band members can proudly display a chestful of medals.

The band is proud of the new uniforms and is always trying to improve the magnificent picture it presents when playing and marching.

The band makes many appearances during the school year at football and basketaball games, pep rallies, class plays, the annual concert, and a trip to some school. (Custer, April 5, 1940.)

The band has progressed very much the last few years. A full compliment of instruments is the goal of our band and money is being raised to get them and replace old, wornout ones now in use.

The Concert Chorus is a group of people who have special singing ability from the boys and girls choruses and also a desire to do advanced work in concert singing for their own enjoyment and for bettering the quality of vocal work in the school and vicinity.

The chorus was organized in January of 1939 by popular demand from students who wanted an advanced type of singing over that which had been traditional in the school. The enrollment was small but the spirit was great and that was all that was necessary to get a basic chorus. Rehearsals were scheduled for once a month but we worked in several extra sessions. That group won a second division award at the music festival at Milton.

The enrollment in the chorus is now forty-eight or almost twice that of last year. Again we are planning to enter the music festival, but in the accompanied chorus classification.

The Girls Chorus is just a group of girls who wish to sing for the fun of singing. Mr. Ende is the director. A main function is to help the Boys Chorus put on an operetta in the spring of the year.

At the beginning of the year it sang optional songs and exercises. After Christmas it started working on the operetta. After this the group will study music theory.

The Boys Chorus is a group of boys singing for the fun and enjoyment they get from singing. Their director is Mr. Ende.

With the help of the Girls Chorus, they put on an operetta. All may partake in this event sponsored to put some money in the music treasury.

It has rehearsals once a week. Optional songs and exercises are sung as part of the work. After the operetta the group studies music theory as applied to singing.

. . . BAND

PresidentBETTY VINCENT
Vice-President ...VIRGINIA NEUMANN
SecretaryLORRAINE ROBERS
Student CouncilHARRY SWENSON

. . . CONCERT CHORUS

PresidentARDYS HEGEMAN
Vice-PresidentMARGE WANGE
SecretaryBETTY VINCENT
Student CouncilKEN JEFFRIS

. . . GIRLS CHORUS

PresidentJAYNE SCHULTZ
Vice-PresidentBERNICE FISHER
SecretaryARBUTUS SCHULTZ
Student CouncilLOIS GATES

. . . BOYS CHORUS

PresidentCHARLES RUDOLPH
Vice-PresidentBOB MANNING
Student CouncilJACK REYER

Musicians In THE SPOTLIGHT

BAND

Front Row—J. Hartnell, E. Evans, Mr. Ende, E. Allen.
Second Row—N. Schlax, M. Jerde, D. Robers, A. Anderson, R. Sarbacher, A. Shotliff, D. Schenning, L. Fait, B. Manning, L. Lois, D. Zelinger, D. Neumann, D. Van Liere.
Third Row—G. Fait, M. Wange, A. Carey, A. Schultz, M. Richter, C. Merten, D. Pringle.
Fourth Row—V. Neumann, M. Merten, B. Meinke, C. Rudolph, L. Baysinger, W. Bryant.
Fifth Row—H. Schmalfeldt, B. Vincent, K. Hegeman, L. Robers, W. Holtdorf, D. Luke.
Sixth Row—B. Robinson, K. Carey, A. Pringle, M. Schenning, C. Dean.
Right, Back—H. Swenson, B. Walker, L. Hollencamp, K. Jeffris.
Left, Back—A. Hegeman, J. Newell, E. Stoxen, G. Breul.



CONCERT CHORUS

First Row—B. Manning, L. Church, J. Schultz, M. Runge, Mr. Ende, L. Baysinger, B. Elverman, R. Griffin, D. Pringle.
Second Row—V. Otto, E. Allen, A. Schultz, C. Merten, P. Boyington, D. Moran, E. Sarbacher, B. Vincent, L. Hollencamp.
Third Row—V. Neumann, M. Wange, B. James, D. Neuman, M. Peterson, M. Richter, A. Pringle, L. Richards, E. Evans, A. Shotliff, A. Hegeman, L. Chernick, E. Stoxen.
Fourth Row—P. Wilds, C. Rudolph, B. Walker, L. Fait, L. Schenk, D. Van Liere, H. Swenson, K. Hegeman, K. Jeffris, D. Retzinger, J. Reyer, D. Robers.



GIRLS CHORUS

First Row—L. Robers, M. Richter, S. Jeffris, R. Sarbacher, M. Jerde, Mr. Ende, R. Vogel, J. McManis, M. Waldo, G. Waldo.
Second Row—N. Ehlert, V. Otto, V. Ingerson, E. Williams, R. Roepke, S. Washtoak, N. Sokolski, S. Hansen, M. Wange, B. James, E. Evans, F. Ficht, A. Wicks, C. Mizzen, L. Gillmore, K. Carey, R. Richter.
Third Row—L. Hollencamp, G. Peterson, P. Madden, M. Hasselman, M. Gauger, B. Fischer, C. Hollister, L. Church, J. Hartnell, L. Chernick, F. Dix, E. Allen, A. Schultz, A. Davis, N. Wertz, C. Pacey, E. Merten.
Fourth Row—D. Moran, L. Nelson, J. Schultz, V. Neumann, M. Peterson, M. Richter, M. Brooks, D. Globis, M. Merten, A. Pringle, L. Richards, B. Forehan, B. Elverman, E. Hansen, L. Gates, A. Gillmore, E. Sorensen, D. Hansen, D. Neumann.

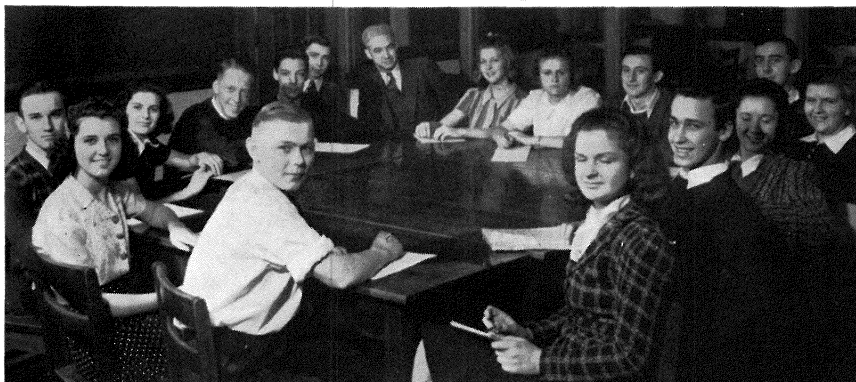


BOYS CHORUS

First Row—H. Bernhoff, R. Hirshmillier, N. Stockwell, B. Manning, Mr. Ende, W. Freeman, K. Hackbarth, B. Robinson, R. Vogel.
Second Row—D. Robers, H. Swenson, B. Walker, S. Hubbard, L. Fait, L. Baysinger, W. Holtdorf, W. Gillmore.
Third Row—P. Wilde, D. Retzinger, J. Reyer, L. Schenk, K. Hegeman, K. Jeffris, C. Rudolph, D. Luke.



Organized for LEADERSHIP and SERVICE



STUDENT COUNCIL

Left to Right—Dick Schenning, Lois Gates, Hardy Schmalfeldt, Dorothy Smith, Harry Swenson, Lenard Fischer, Jack Reyer, Mr. Schnurr, Marge Wange, Manette Runge, Art Scott, Don Van Liere, Betty Vincent, Margaret Richter, Andy Anderson, Lorraine Richards.



JUDGING TEAM

Front Row — Vernon Edwards, Bob Manning, Lenard Schenk, Leland Stohr, John Elsey, Frank Sheahan, Warren Gillmore, Alfred De Bell. Back Row—Mr. Frey, Arnold Hansen, Louis Oetting, Robert Walker, Earl Richter, Mr. Schnurr.



COMMERCIAL CLUB

First Row — Margaret Richter, Lorraine Robers, Betty Vincent, Bob Robinson, Elaine Vander Zee, John Hefner, Naydean Wertz, Patricia Madden. Second Row—Norma Schlax, Joyce Newell, Dorothy Bergholz, Miss Berger, Joyce Robinson, Natalie Sokalski, Addie Davis. Third Row — Elaine Allen, Dorothy Wellman, Manette Runge, Mary Merten, Betty James, Eleanor Forster, Evelyn Evans, Ruth Roepke, Eunice Williams.



F. F. A.

Front Row — Donald Pringle, Robert Sheahan, Eugene Vincent, Keith Hegeman, Lenard Schenk, Bob Robinson, Leland Stohr, Billy Meinke, Charles Salterman, Bob Sarbacher. Back Row — Mr. Frey, George Huntoon, Chester Boyington, Dick Sheahan, Geylord Maleski, Herbert Bernhoft, James Mitchell, Lloyd Baysinger, Alfred De Bell, Raymond Griffin, Dick Schenning, Milton Frank, Mr. Schnurr.

STUDENT COUNCIL . . .

President ART SCOTT
Vice-President DON VAN LIERE
Secretary MANETTE RUNGE

In order that Wilmot High would have an official student body capable of a certain amount of self-regulation, the student council was organized. It consists of the following persons this year: Art Scott representing the W Club; Don Van Liere, Dramatics Club; Dorothy Smith, Junior Class; Harry Swensen, Band; Marge Richter, Home Economics; Lois Gates, Girls Chorus; Dick Schenning, F. F. A.; Marge Wange, French Club; Lenard Fisher, Freshmen Class; Lorraine Richards, Senior Class; Kenneth Jeffris, A Capella; Andy Anderson, Sophomore Class; Manette Runge, Commercial Club; Jack Reyer, Boys Chorus; Hardy Schmalfeldt, B. A. A.; Ken Jeffris, Concert Chorus.

A class or an organization may sponsor any party with the consent of the Student Council. The purchase of the loud-speaker was made possible through the Student Council.

JUDGING TEAM . . .

Part of the work of the department of agriculture is the development of judging teams which compete in the state contest in Madison. Various types and classes of farm animals and agricultural products are included in the contest ,thereby providing a wide range of experience.

During the trip, time is provided to visit many places of interest in Madison and attend a Big Ten football game. Thus this trip proves to be a pleasing combination of business and pleasure. Many of the boys plan on making this trip several times during their four years in school.

COMMERCIAL CLUB . . .

President BETTY VINCENT
Vice-President NAYDEAN WERTZ
Secretary DOROTHY WELLMAN
Student Council MANETTE RUNGE

The Commercial Club was organized in 1929 for the purpose of creating more interest in and furthering ability in commercial abilities. The club has always had a good membership and has always been very active. We are proud to say that our club has usually more money on hand than any other organization.

Our greatest accomplishment and perhaps the greatest source of our money has been the sponsoring of the school paper. An issue is presented each month. Besides all the very interesting articles in the paper as the editorials, class news, special articles, sports page, and the funny page, there is the popular "Gossip Page." Our editor of the school paper this year is Dorothy Bergholz.

The awarding of the typing pins each year is sponsored by our club. Our most recent accomplishment is the purchase of an adding machine to be used by all students.

F. F. A. . . .

President DICK SHEAHAN
Vice-President LLOYD BAYSINGER
Secretary RAYMOND GRIFFIN
Student Council DICK SCHENNING

The Future Farmers is a national organization with state and local chapters. The members of our local chapter have shown much enthusiasm in project work, pest eradication, judging team work, and social events.

Each member of the organization has a farm practice program. This gives him an opportunity to put into practice what he has learned in agriculture.

Every winter a pest eradication contest is conducted by the F. F. A. Prizes for the winners are donated by business men of the community.

We have one monthly meeting for business and one monthly meeting for education and recreation.

One of our newest clubs in school, the Home Economics Club, was organized in 1939 with a group of about ten members. The purpose of the club was to create more interest in home making. We organized again this year and increased the membership to about twenty.

Last year, the club sponsored a banquet for the county baseball association and were very pleased in the outcome. Before the end of the school term we plan to have enough money by selling candy, besides what we now have, to buy drapes for the home ec. room. After we have this completed we shall feel that we really have accomplished a purpose.

In 1929 the Dramatics Club was organized for the purpose of furthering interest and ability in dramatics. Although it has not stuck so very closely to its purpose, but has become more of a social affair, we have at each of our meetings some little procedure to try to improve our abilities and knowledge of dramatics. Some of us are hesitant in doing some things we are asked to do, but really it is fun. Our biggest feature is the play we present each year at the carnival. They are usually quite a success, and we try to have something different each year.

At our meetings, after the business and entertainment is finished, we dance for a while and then are served refreshments. Apparently everyone enjoys our meetings and is glad when the next one comes.

The G. A. A. is an all girls club organized for the purpose of furthering interest in athletics. All freshmen are invited to join the club and at the first social meeting are initiated by the old members.

It has been a social, as well as an athletic club. The monthly meetings have consisted of sleighrides, rollerskating, hiking, swimming and similar activities. Refreshments are usually served and sometimes we have dancing after that, if it is not too late.

Members of the club may earn school letters by participation in athletic events of all types. We have a point system by which each event or activity in swimming or skating is given so many points for as many hours of activity. When we have earned our required points we are awarded a letter.

The Boys Athletic Association is open to all the boys in the school who wish to be members. The objectives of the group are: to provide a complete program of athletics from the beginning of the school year to the end; to give every boy an opportunity to participate in some form of athletics. We sponsor these major sports: Football, Basketball, and Baseball, and help to develop a physical-education program. We have had a successful season; and the plays as outlined for next year by Coach Frey provide: The development of A and B squads in each sport, and a more complete intramural program for those who are not and do not wish to become members of such squads. Our association stands for teams that fight to win, that play clean, that live right, that know how to lose; but always remember, they represent Wilmot High School.

. . . HOME ECONOMICS

PresidentLORRAINE RICHARDS
Vice-PresidentNORMA SCHLAX
SecretaryVIRGINIA NEUMANN
Student CouncilMARGE RICHTER

. . . DRAMATICS CLUB

PresidentELEANOR FORSTER
Vice-PresidentLORRAINE ROBERS
SecretaryBETTY VINCENT
Student CouncilDON VAN LIERE

. . . G. A. A.

PresidentDOROTHY BERGHOLZ
Vice-PresidentLILLIAN CHERNICK
SecretaryBERNICE FISCHER
Student CouncilBETTY VINCENT

B. A. A. . . .

PresidentDON VANDER ZEE
Vice-PresidentART SCOTT
SecretaryGLENN HOLLISTER
Student CouncilHARDY SCHMALFELDT

Training for Health and Leisure

HOME EC. CLUB

First Row—A. Schultz, A. Wicks, S. Jeffris, N. Schlax, P. Taylor, M. Peterson, J. Schultz, V. Neumann, L. Gillmore, M. Richter. **Second Row**—E. Vander Zee, J. Newell, L. Chernick, D. Moran, B. Elverman, Miss Bosselman, L. Richards, E. Sorrenson, R. Roepke, E. Williams, N. Sokalski.

DRAMATIC CLUB

First Row—P. Madden, V. Neumann, M. Peterson, S. Jeffris, N. Sokalski, R. Vogel, D. Neumann, V. Paul, B. Vincent, L. Robers. **Second Row**—Miss Thomas, J. Newell, B. Forehan, M. Runge, A. Pringle, L. Richards, E. Sarbacker, E. Stoxen, N. Schlax, D. Smith, N. Wertz. **Third Row**—N. Schwartz, L. Oetting, B. Fischer, E. Forster, D. Sarbacker, M. Richter, C. Dean, R. Richter, K. Carey, A. Shottliff, A. Hegeman, L. Chernick, A. Carey, M. Richter. **Fourth Row**—H. Swenson, B. Elverman, V. Richards, L. Baysinger, A. Scott, L. Pepper, E. Richter, M. Wange, C. Rudolph, B. James, E. Evans, A. Davis, E. Vander Zee, D. Van Liere, K. Jeffris, K. Hegeman.

G. A. A.

First Row—L. Church, S. Jeffris, R. Sarbacker, D. Nienhaus, J. Hartnell, M. Jerde, Miss Dake, C. Mizzen, H. Sakalowski, F. Dix, J. McManis, A. Wicks, D. Neumann. **Second Row**—S. Washtoak, P. Madden, V. Otto, C. Merten, P. Boyington, M. Richter, L. Robers, B. Vincent, J. Newell, D. Bergholz, E. Stoxen, I. Cummings, R. Elfers, A. Schultz, A. Davis, N. Wertz. **Third Row**—G. Peterson, L. Hollencamp, E. Merten, C. Hollister, V. Neumann, N. Schlax, R. Vogel, E. Allen, K. Carey, R. Richter, H. Kohout, E. Evans, A. Shottliff, A. Iiege-man, V. Paul. **Fourth Row**—L. Chernick, S. Axtell, M. Besch, J. Jensen, M. Merten, D. Globis, M. Brooks, N. Ehlert, C. Pacey, E. Forster, D. Smith, B. James, M. Wange, V. Richards, B. Elverman, E. Robers.

B. A. A.

First Row—K. Hackbarth, B. Robinson, D. Luke, H. Schmal-feldt, G. Hollister, B. Meinke, B. Elverman, L. Oetting, D. Simpson, D. Vander Zee, A. Scott, A. Wellman, C. Boying-ton, A. Merten, M. Schenning, N. Stockwell. **Second Row**—D. Allen, B. Hirschmiller, B. Appel, C. Solterman, J. Mitchell, G. Swartz, R. Vogel, A. De Bell, H. Kolmos, L. Baysinger, D. Breul, D. Robers, M. Frank, N. Schenning, G. Maleski, D. Zel-inger, W. Pohlman, L. Fischer, Mr. Frey, Mr. Duffy, G. Fait. **Third Row**—J. Sokolski, F. Der-ler, C. Kohout, R. Hirschmiller, H. Brown, V. Edwards, B. Sar-backer, G. Huntton, J. Reyer, D. Retzinger, A. Hansen, L. Lois, Ed Retzinger, W. Gillmore, W. Kanis, R. Stoxen, L. Brinkman, F. Sheahan, B. Sheah-an. **Fourth Row**—P. Wilde, J. Hefner, E. Richter, A. Ander-son, L. Pepper, L. Fait, S. Hub-bard, L. Schenk, R. Newbury, H. Swenson, K. Hegeman, D. Van Liere, K. Jeffris, C. Rud-olph, L. Nelsen, J. Elsey, W. Bryant, E. Vincent.



And Sociability . . .



BATON TWIRLERS

First Row—Doris Neumann, Connie Merten, Ardyce Hegeman, Ruth Richter, Anna Mae Shotliff, Ruth Vogel. **Second Row**—Virginia Paul, Betty James, Ray Griffin, Ruth Elfers, Shirley Jeffris.



FRENCH CLUB

Front Row—Doris Neumann, Anna Marie Carey, Iona Cummings, Miss Thomas, Virginia Paul, Dorothy Smith, Marge Wange. **Back Row**—Marie Richter, Manette Runge, Amy Pringle, Evelyn Sarbacher, Anna Mae Shotliff, Eunice Stoxen, Elenor Forster, Evelyn Evans.



DANCING CLASS

First Row—Miss Barnes, Phyllis Taylor, Dorothy Smith, Ken Jeffris, Ardyce Hegeman, Stanley Hubbard, Virginia Paul, Doris Neumann, Dick Roberts. **Second Row**—Charles Solterman, Eunice Stoxen, Virginia Neumann, Marge Peterson, Anna Mae Shotliff, Betty Vincent, Margaret Richter, Shirley Jeffris, Eunice Williams. **Third Row**—Francis Dix, Mary Jane Davis, Bernice Fischer, Lenard Schenk, Eleanor Forster, Doris Sarbacher, Marie Richter, Carlita Dean, Ruth Richter, Kay Carey, Keith Hegeman, Evelyn Sarbacher, Don Van Liere. **Fourth Row**—Mildred Brooks, Earl Richter, Mary Merten, Bernice Elverman, Wesley Holdorf, Marge Wange, Charley Rudolph, Betty James, Lawrence Falt, Evelyn Evans, James Mitchell, Dorothy Globis, Lyle Nelsen.



CHEER LEADERS

Front Row—Jayne Schultz, Bob Robinson, Dorothy Smith. **Back Row**—Marge Wange, Virginia Neumann, Eleanor Forster.

BATON TWIRLERS . . .

A new active group in school is the Baton Twirling Club of eighteen members, who are really artists of dizzy fingers as they gyrate their silver sticks in beauteous formations and tricky, complicated stunts. The twirling club was organized in September, 1939, by Mr. Ende, and has practiced Thursday after school. The group is a spectacular group and adds to any program in which it appears. A drum-major for the band is chosen from

the group and six best twirlers will enter the twirling contest at the music festival. At present the twirlers do not have uniforms, but it is hoped that six special drum-major-ette outfits will be purchased. The group has twirled at football and basketball games, and also for concerts. It is hoped that the school will see more of this worthy group in the future.

FRENCH CLUB . . .

President MANETTE RUNGE
Vice-President DOROTHY SMITH
Secretary ARDYCE HEGEMAN
Student Council MARGE WANGE

The newest organization in the high school campus is the French Club of about fifteen members. It was established through the enthusiasm of a group of girls in school and through the willing help of Miss Thomas. The purpose is to learn to speak French. They have arranged to correspond with girls in France. The letters we receive are written in French, and the fun is trying to translate them. The club is new and has a very good start: In the coming years we hope to become a large group and really know our French.

DANCING CLASS . . .

In October of 1939, Miss Bessie Barnes began her work as a dancing instructor at Wilmot. Miss Barnes teaches many types of dancing and as her work is popular many of us have learned new steps, and the Freshmen have been privileged to learn how to dance before they become seniors! In order that all might put to use their knowledge of dancing, Miss Barnes has sponsored a number of dances in the school gym. To one of the dances the

whole school was invited and another time the Dramatics Club was invited. We were privileged to have Ross Whitmire, of Montana, who taught us how to square dance. The dancing class has been represented in the junior and freshman assembly programs and also played a big part in the Operetta. All in all the class has been successful and we are sure it will continue to be.

CHEER LEADERS . . .

At the beginning of the year a large number came out for cheerleading. They were drilled for each game. They all would cheer at the games but a few each time would put on a pep meeting. This pep meeting was held before each home game to arouse some school spirit. The cheerleaders always arranged it. This year, some of the cheerleaders received uniforms. Each class elected two cheerleaders. Both senior and junior cheerleaders received uniforms but only one sophomore cheerleader received a uniform. The fresh-

men were just drilled for the following year. Each cheerleader made her own uniform. It was made of red wool flannel, lined with white. The uniforms are similar to skating outfits. The uniforms gave the cheerleaders more confidence for cheering. Every cheerleader has an attractive uniform to work for from now on. A letter is given for cheerleading. This year the cheerleaders have worked very hard to reach their goal. They hope to continue.

Schoolmates All!



- | | | |
|-----------------------------|---------------------------------------|---|
| 1. Two of a kind!!!! | 11. Where's my wandering boy, tonite? | 20. Meet the "Boss" of the Echo |
| 2. This one stumped us! | 12. One, Two, Three, Snap! | 21. "Dauntless Duffy" of the Mighty Puffers |
| 3. Darn that "Flossie"!! | 13. Sunning herself | 22. Ice Carnival Queen |
| 4. "Relatives by Affection" | 14. Wanna Fight? | 23. In the mood! |
| 5. Around the corner | 15. Smile!!! | 24. Spring fever? |
| 6. Take your pick, boys! | 16. Lonesome???? | 25. Ginny, strut your stuff |
| 7. Anybody home??? | 17. Attention! | 26. Where's Jiggs? |
| 8. Junior Stage Crew | 18. Inseparable | 27. Class is now in session |
| 9. Roaring Six!!! | 19. Pals!! | 28. The Quints |
| 10. Hi, Gus!! | | |

Playmates All!



- | | | |
|-------------------------------------|---|--------------------------------------|
| 1. The fearless five | 14. Come on, Freshies, smile! | 26. Ray |
| 2. Look out! You'll miss! | 15. Harry and his trombone | 27. Jellyfish Juniors |
| 3. Football squad | 16. Struttin'! | 28. What cha doin', Gus? |
| 4. Heave ho! | 17. Toot the Tooter, Don | 29. Look who's here! |
| 5. Watch it, now! | 18. Drummer boy | 30. Ice Carnival Queen and her Court |
| 6. All set | 19. Jiggs and Marge | 31. School Daze |
| 7. Oh, Johnny! | 20. Wilmot High gals | 32. Forward, March! |
| 8. Waiting | 21. Pepper | 33. Pals! |
| 9. Keep smiling | 22. Let us in on the joke too, Velma. | 34. Freshmen Basketball Squad |
| 10. Hold that pose | 23. Coach | 35. Hello, Normie, how's Lil? |
| 11. You got to be a football hero | 24. Early morning arrivals | 36. Ain't we cute? |
| 12. Smile, Scotty! | 25. In the spring, a young man's fancy— | |
| 13. Don, the mighty baseball player | | |

We Meet OUR HOSTS And . . .

THE ECHO staff hopes that you have enjoyed reading this book. We have worked hard to make it a success, but we feel that our work will be amply repaid if we know that you like our book.

We now introduce the staff members:

<i>Editor</i>	DOROTHY BERGHOLZ
<i>Assistant Editor</i>	BETTY VINCENT
<i>Business Manager</i>	DON VAN LIERE
<i>Assistant Business Manager</i>	HARDY SCHMALFELDT
<i>Athletic Editor</i>	ART SCOTT
<i>Music Editor</i>	VIRGINIA NEUMANN
<i>Organization Editor</i>	LORRAINE RICHARDSON
<i>Junior Editor</i>	NORMAN STOCKWELL
<i>Sophomore Editor</i>	DICK ROBERS
<i>Freshman Editor</i>	GRACE WALDO
<i>Snapshot Editor</i>	NORMA SCHLAX
<i>Typist</i>	JOYCE ROBINSON
<i>Faculty Advisors</i>	MISS BERGER and MR. FRANK



ECHO STAFF

(Left to right) Dorothy Bergholz, Betty Vincent, Norman Stockwell, Art Scott, Dick Robers, Grace Waldo, Mr. Frank, Norma Schlax, Virginia Neumann, Lorraine Richards, Joyce Robinson, Miss Berger, Don Van Liere, Hardy Schmalfeldt.

AFTER THANKING OUR SPONSORS

Realizing that the publication of the 1940 Echo would have been impossible without the help of our sponsors, we wish to present them and thank them for their loyalty to educational work and Wilmot High.

We take great pleasure in presenting:

Academy Cleaners & Dyers—Burlington, Wis.	Dalton's Store—Silver Lake, Wis.
Albrecht Barber Shop—Wilmot, Wis.	Dean's, Bert, Barber Shop—Silver Lake, Wis.
Antioch Garage—Antioch, Ill.	Dean, George T., Hardware Store— Bassett, Wis.
Antioch Lumber & Coal Co.—Antioch, Ill.	Elite Sweet Shop—Burlington, Wis.
Antioch News—Antioch, Ill.	Enterprise Feed & Supply Co.— Woodworth, Wis.
Antioch Packing House—Antioch, Ill.	Ernst's Book Store—Kenosha, Wis.
Badger Paint Store—Burlington, Wis.	Evans, John, & Son—Salem, Wis.
Bank of Burlington—Burlington, Wis.	First National Bank of Antioch—Antioch, Ill.
Barden Store—Kenosha, Wis.	First National Bank of Kenosha— Kenosha, Wis.
Bassett Garage—Bassett, Wis.	Farmers Co-operative Supply Co.— Truesdell, Wis.
Beck & Mahlsted Co.—Kenosha, Wis.	Gallagher Paint Co.—Kenosha, Wis.
Benson's Service Station—Highways 45 & 50	Garb's Travel Shop—Kenosha, Wis.
Bell Clothing House—Kenosha, Wis.	Gasul's Inc.—Kenosha, Wis.
Betty Shoppe—Kenosha, Wis.	Harbaugh, Charles, Lumber Co.— Twin Lakes, Wis.
Bidinger Music House—Kenosha, Wis.	Hartnell Chevrolet Sales—Salem, Wis.
Beihoff Music Co.—Milwaukee, Wis.	Hegeman's Drug Store—Wilmot, Wis.
Bode Bros. Co.—Kenosha, Wis.	Herb's Service Station & Tavern— Twin Lakes, Wis.
Bristol Guernsey Dairy—Bristol, Wis.	Hockney, C. L., Machine Shop— Silver Lake, Wis.
Brosk's School Supplies—Kenosha, Wis.	Holbrook, L. H., Jeweler & Optometrist— Kenosha, Wis.
Buften, R. T., Hardware Store— Silver Lake, Wis.	Holtdorf Insurance Agency—Silver Lake, Wis.
Burlington Free Press—Burlington, Wis.	Hotel Badger—Burlington, Wis.
Burlington National Bank—Burlington, Wis.	Hubbard, C. S., Jeweler & Engraver— Kenosha, Wis.
Burlington Sanitary Milk Co.— Burlington, Wis.	Isermann Bros.—Kenosha, Wis.
Carey Electric & Plumbing Shop— Antioch, Ill.	Itzin, William A., Harness & Shoe Shop— Burlington, Wis.
Carey Hardware Co.—Twin Lakes, Wis.	Jeffris Camp—Highways 50 & 83
Champion Motor Co.—Burlington, Wis.	Kellogg Ice Cream Co.—Burlington, Wis.
Chocolate Shop—Kenosha, Wis.	Kenosha Evening News—Kenosha, Wis.
Coca-Cola Bottling Co.—Kenosha, Wis.	
Coughlin-Turner Inc.—Burlington, Wis.	
Crossin, James A., Coroner—Kenosha, Wis.	
Cunningham Buick Co.—Burlington, Wis.	
Cunningham Hat Shop—Burlington, Wis.	
Dale, Thomas J., Jeweler & Optometrist— Kenosha, Wis.	

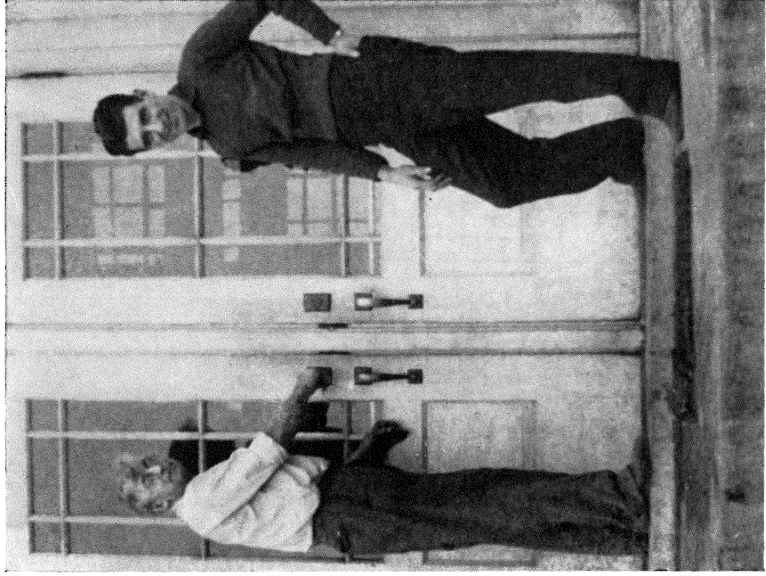
Kenosha Knitting Co.—Kenosha, Wis.
 Kenosha Laundry—Kenosha, Wis.
 Keulman, William, Jeweler & Optometrist—
 Antioch, Ill.
 Klass, Otto S., Mens Wear Store—Antioch, Ill.
 Knettle Optical Company—Kenosha, Wis.
 Kings Drug Store—Antioch, Ill.
 Krahan Bros. Service Station—Salem, Wis.
 Kriska Grocery & Meat Market—Wilmot, Wis.
 Korf's Sixth Avenue Store—Kenosha, Wis.
 Lois, A. H., Feed Store—Bassett, Wis.
 Mari Anne's Dress Shop—Antioch, Ill.
 McDougall Hardware Store—Wilmot Wis.
 Meinhardt Bank—Burlington, Wis.
 Merten Garage—Bristol, Wis.
 Mica Furniture Co.—Kenosha, Wis.
 Mid-West Music Shop—Kenosha, Wis.
 Milk Producers of Kenosha—Kenosha, Wis.
 Montgomery Ward & Co.—Kenosha, Wis.
 Morrison's Store For Children—Kenosha, Wis.
 Murphy Products Co.—Burlington, Wis.
 Nehlsen, T. F., Sport Store—Kenosha, Wis.
 Neumode Hosiery Shop—Kenosha, Wis.
 Oak-Bar-B-Q—Salem, Wis.
 Penney, J. C., Company Inc.—Kenosha, Wis.
 Pieters Brothers—Burlington, Wis.
 Pitts General Store—Bristol, Wis.
 Platts Bros. Riding Stables—Twin Lakes, Wis.
 Purity Ice Cream, Chas. Barber, Distributor—
 Silver Lake, Wis.
 Ragon Motor Co.—Kenosha, Wis.
 Rags Tavern—Twin Lakes, Wis.
 R & H Chevrolet Sales—Antioch, Ill.
 Richter's Garage—Twin Lakes, Wis.
 Richter's Store—Silver Lake, Wis.
 Riverside Garage—Wilmot, Wis.
 Roepke's Dept. Store—Twin Lakes, Wis.
 Schenning Insurance Agency—
 Silver Lake, Wis.
 Schmidt Implement Co.—Salem, Wis.
 Schultz, Frank J., Contractor & Builder—
 Salem, Wis.
 Schultz Garage—Wilmot, Wis.
 Schultz, H. W., Plumbing & Heating—
 Salem, Wis.
 Scott's Dairy—Antioch, Ill.
 Sears Roebuck & Co.—Kenosha, Wis.
 Sheen, Willis, Implements—Trevor, Wis.
 Shotliff, R. C., Store—Wilmot, Wis.
 Siebert, Matt. G., Assemblyman—Salem, Wis.

Silver Lake Garage—Silver Lake, Wis.
 Silver Lake Drug Store—Silver Lake, Wis.
 Silver Lake State Bank—Silver Lake, Wis.
 Sparkling Springs Water Co.—Kenosha, Wis.
 Spiegelhoff's Grocery—Burlington, Wis.
 Snow White Ice Cream Store—Antioch, Ill.
 Standard Oil Company—Silver Lake, Wis.
 Stang, L. J., Store—Burlington, Wis.
 Steimont's Studio—Waukegan, Ill.
 Style Shop—Antioch, Ill.
 Sunshyne Dairy—Kenosha, Wis.
 Sutcliffe Floral Shop—Wilmot, Wis.
 Swenson, Ray, Jeweler—Burlington, Wis.
 Taylor Oil Company—Silver Lake, Wis.
 Taylor Skelgas—Burlington, Wis.
 Thomas Hansen & Sons Co.—Kenosha, Wis.
 Trevor General Store—Trevor, Wis.
 Twin Lakes Food Mart—Twin Lakes, Wis.
 Union Chevrolet Co.—Burlington, Wis.
 Union Dye Works—Kenosha, Wis.
 Van Liere, John W., General Insurance—
 Salem, Wisconsin
 Vogelsang's Bakery—Burlington, Wis.
 Vogue Beauty Shoppe—Burlington, Wis.
 Ward Barber Shop—Twin Lakes, Wis.
 Webb's Variety Store—Antioch, Ill.
 Wilbur Lumber Co.—Silver Lake, Wis.
 William's Dept. Store—Antioch, Ill.
 Winters, L. R., General Insurance—
 Twin Lakes, Wis.
 Wisconsin Gas & Electric Co.—
 Burlington, Wis.
 Woodworth Garage—Woodworth, Wis.
 Your Beauty Nook—Twin Lakes, Wis.
 A Friend—Kenosha, Wis.

PROFESSIONAL SPONSORS

Becker, B. A., M. D.—Silver Lake, Wis.
 Bode, Harold M., Attorney & Counsellor—
 Kenosha, Wis.
 DeWitt, C. A., M. D.—Silver Lake, Wis.
 Graves, J. P., M. D.—Kenosha, Wis.
 Hill, B. Spalding, M. D.—Kenosha, Wis.
 Lutterman, E. J., D. D. S.—Antioch, Ill.
 Perry, Arthur R., Optometrist—
 Burlington, Wis.
 Richardson, Chester D., Attorney at Law—
 Kenosha, Wis.
 Schwartz, Harry L., M. D.—Kenosha, Wis.
 Taylor-Philips & Taylor, Attorneys at Law—
 Kenosha, Wis.

We Close the Door



GUS NEUMANN

RUS ELWOOD

46

AUTOGRAHS

